



SRI VASAVI ENGINEERING COLLEGE (AUTONOMOUS)

(Sponsored by Sri Vasavi Educational Society)
(Approved by AICTE, New Delhi & Permanently affiliated to JNTUK, Kakinada)
(Accredited by NAAC with 'A' Grade, Recognized by UGC under section 2(f) & 2 (B))
(NBA Accreditation to B.Tech, EEE, CSE, ME and ECE Branches for 3 Years)
Pedatadepalli, **TADEPALLIGUDEM - 533101**, W.G Dist. (A.P)

6.2. Strategy Development and Deployment

6.2.1 QIM	<i>The institutional perspective plan is effectively deployed and functioning of the institutional bodies are effective and efficient as visible from policies, administrative setup, appointment, service rules, and procedures, etc.</i>
----------------------------	--

Response:

Yes, the college employs strategic planning, as the successful execution of the strategic plan is crucial for the ongoing advancement of the institution. Tirelessly striving to achieve its objectives with meticulous accuracy, the institution emphasizes academic distinction, infrastructural growth, research and development, faculty enhancement, student career progression, and the refinement of assessment and evaluation methods.

The institution has a robust strategic plan targeting well-defined goals. This plan is implemented through consistent action plans, daily activities, resource distribution, and the engagement of stakeholders at multiple levels. Periodic assessments of performance and quality indicators offer transparency in realizing the strategic objectives. The Institute has an IQAC to evaluate the progress of the Strategic Plan and institutional policies and to take remedial actions for achieving long-term goals. The perspective plan is designed with the institution's vision, mission, and objectives in mind.

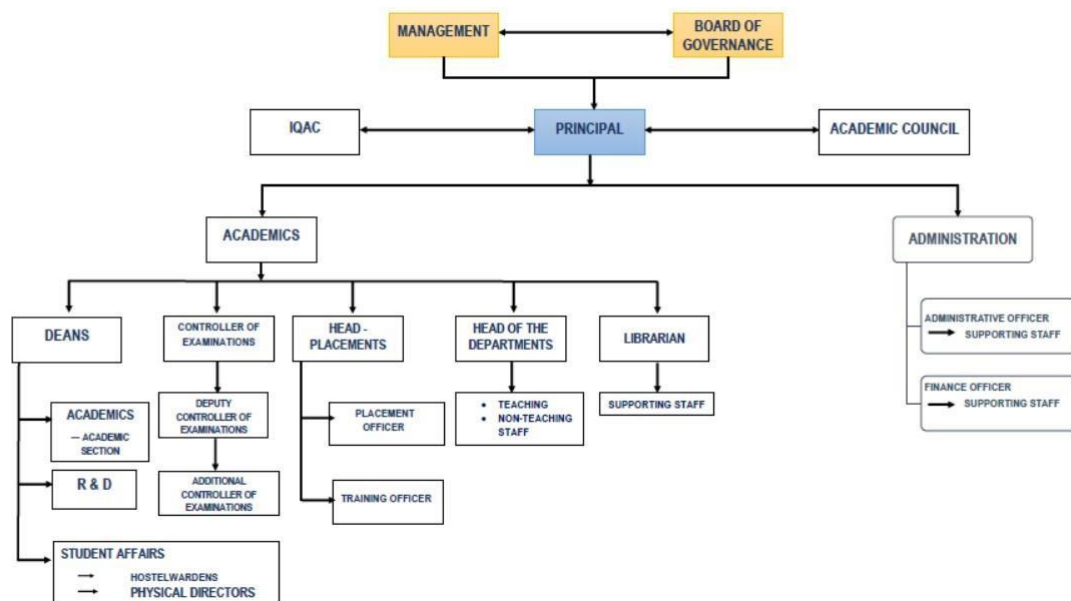
Sri Vasavi Engineering College is being governed by the Management at the highest level, delegating administrative powers to the Principal, where the Principal is planked by two significant committees like IQAC on one hand and Academic Council on the other hand, supporting him to maintain quality in the sphere of Academics. The spectrum of power of the principal is segregated into Academics and Administration.

The hierarchal Academic wing constitutes Deans, Controller of Examinations, Head Placements, Heads of various departments, Librarian, & Physical Directors. Deans of various categories like Dean Academics, Dean R&D and Dean Student Affairs contribute in accomplishing the tasks allocated by the Principal. The college hostel wardens function under the Dean Student affairs, reporting him of the various day-to-day activities. The Controller of Examinations conducts examinations with the assistance of Deputy Controller of Examinations and Additional Controller of Examinations. The Head Placements looks after the placements with the help of the Placement officer and Training Officer. The Heads of various departments like Civil, Mechanical, Electrical and Electronics, Electronics and Communication, Electronics and Communication Technology, Computer Science, Computer Science and Technology, Artificial Intelligence, Artificial Intelligence and Machine Learning, the Basic Sciences & Humanities & MBA execute the ideas of the top rung. They run the department with the assistance of teaching as well as non-teaching staff.

Sri Vasavi Engineering College maintains and follows a well-organized HR policy to guide faculty appointments and services at the institution. This HR policy specifies that the principal appoints a recruitment and promotions committee, which includes two professors from the college and an external expert.

The administrative wing is yoked by the Administrative officer and the Finance officer. The supporting staff of the office complies with the college administration head i.e., the Principal.

SRI VASAVI ENGINEERING COLLEGE (A) - ORGANOGRAM



Attachments:

- 6.2.1(a): <http://srivasaviengg.ac.in/uploads/SVEC%20Strategic%20Plan.pdf>
- 6.2.1(b): <http://srivasaviengg.ac.in/governing.php>
- 6.2.1(c): [BOG Minutes](#)
- 6.2.1 (d) : [Academic Council and its Minutes](#)
- 6.2.1 (e) :HR Policy: http://srivasaviengg.ac.in/HR_Policy.php
- 6.2.1 (f) [Grievance Policy](#)
- 6.2.1 (g) <http://srivasaviengg.ac.in/iqac.php>
- 6.2.1 (h): **Academic Regulations link in the website:** <http://srivasaviengg.ac.in/regulations.php>
- 6.2.1(i): [Committees](#)
- 6.2.1 (j) [Committees Effectiveness](#)